



MANDARIN ORIENTAL
HYDE PARK
LONDON

Welcome to Mandarin Oriental
Suite living. An unparalleled London experience.



A turret over Knightsbridge

In our distinctive red brick turrets there are three suites that are full of character as they reflect the octagonal exterior. Our Junior Suites have a spacious open plan layout; they are traditionally popular with families looking to enjoy the luxuriant interiors, our fashionable address and Hyde Park views.



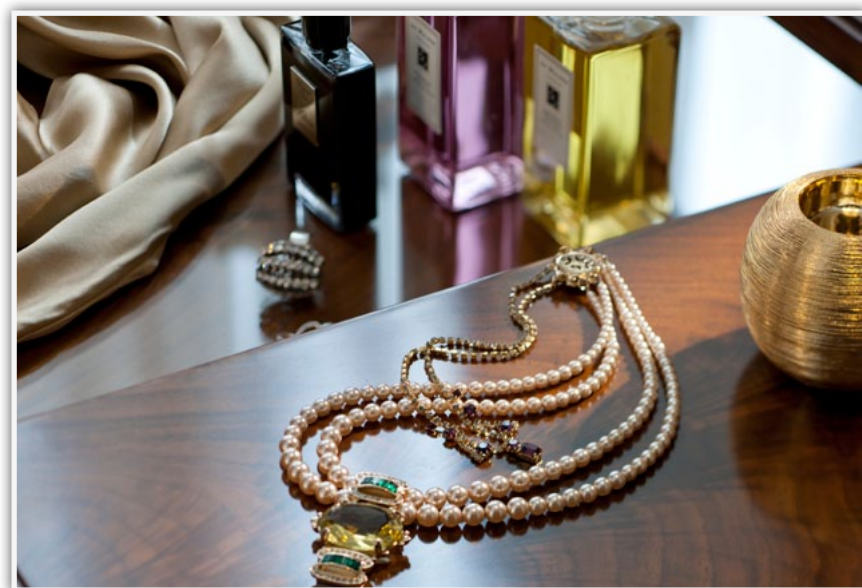
Ever changing views

All these suites offer luxury in a rare location overlooking the seasonal beauty of Hyde Park. We have one and two bedroom Park Suites, our extravagantly spacious Deluxe Park Suite and a Presidential Suite with a large private balcony. Sunlight floods through French windows and the open fire gives a special warmth in winter months. Each room is decorated with refined English elegance and finished with Regency details. Bang and Olufson technology is first class as is the attentive service of your Guest Services Manager.



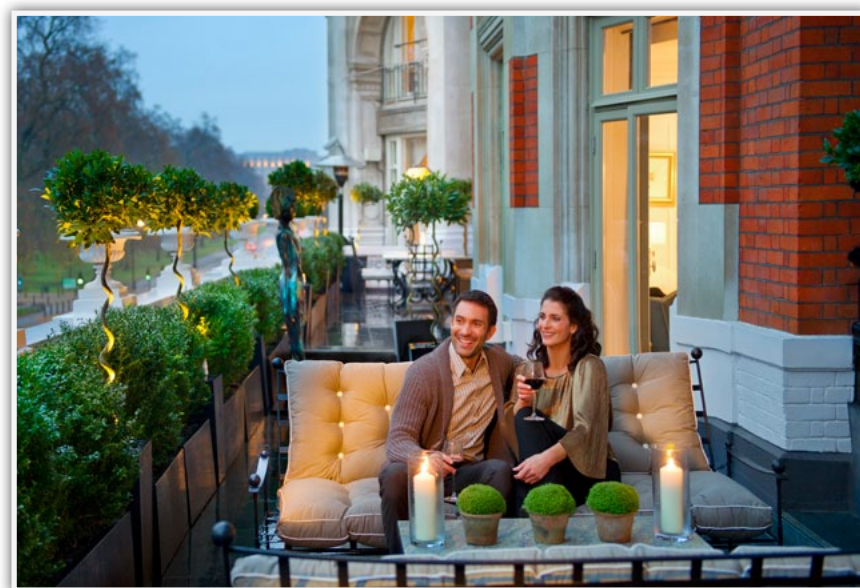
Two bedroom luxury

Our Imperial Suite is amongst the largest two bedroom suites in London with balconies overlooking Hyde Park and a prestigious Knightsbridge location. Our Sovereign Suite is a vast set of rooms which takes advantage of the park views at every opportunity. A balcony stretches the length of the suite with access from both the high style bathroom and French windows in the living room. Guests have a unique luxury setting for a private al fresco dinner with Mandarin Oriental service.



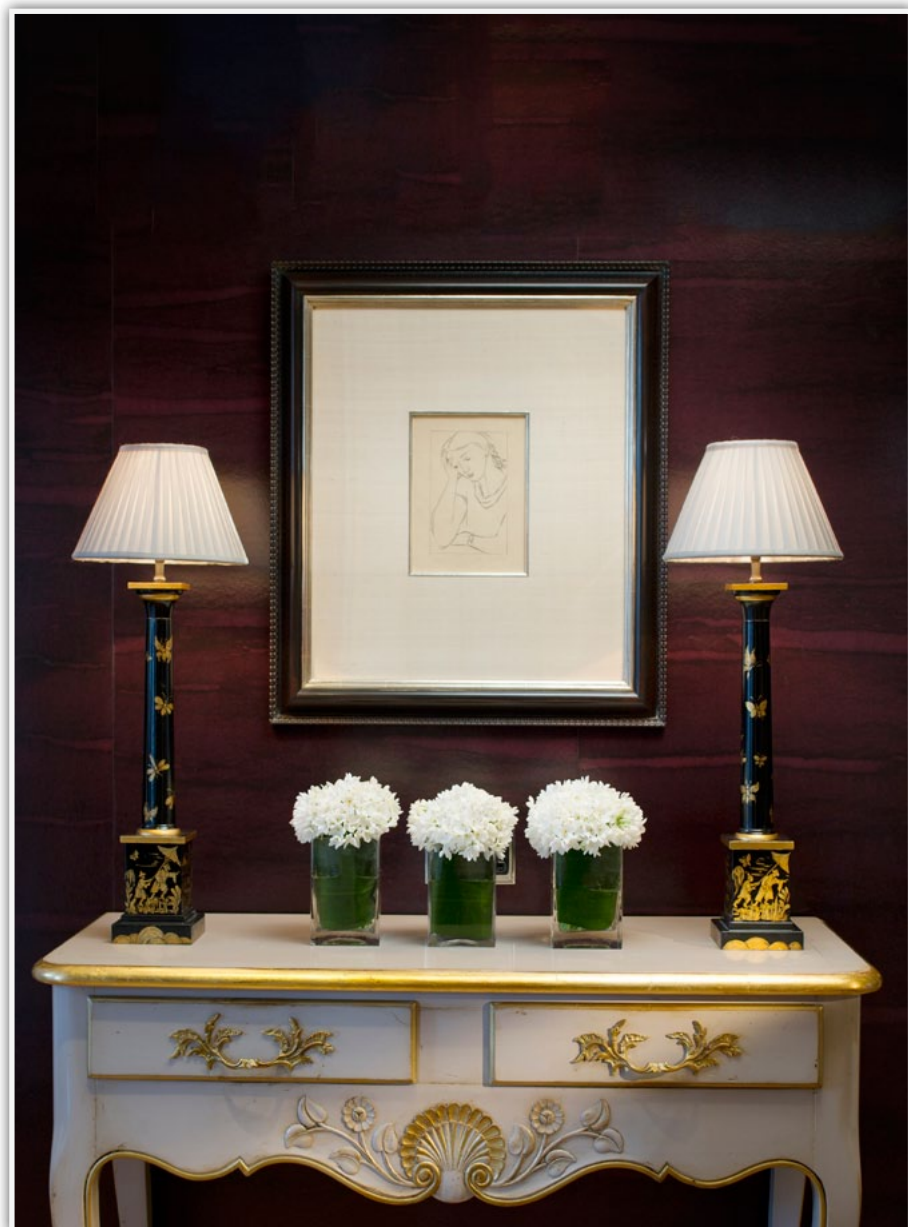
A regal Knightsbridge residence

Our Royal Suite is a prestigious and luxurious three bedroom residence. The exclusive design is refined and delicate; it features Lalique crystal lights and a steam shower experience beneath a dramatic fibre optic chandelier. The master bedroom has a spacious walk in dressing room and a balcony with fine views over Hyde Park.



Regal living space

The living room reflects the overall spaciousness of this 242 square metre suite. The fresh contemporary atmosphere is complemented by leafy park views from a balcony that sweeps the full length of the rooms. Featuring select art works, original fireplace and bespoke platinum-topped coffee table this is a luxury designer space.



Regal dining

The Royal Suite is one of London's most exclusive settings for private entertainment; be that dinner for eight or a party for forty on your balcony with magical Hyde Park just below. A private kitchen has a discreet separate staff entrance. The space can equally be used for meetings with Bang & Olufsen audio visual equipment concealed behind antique mirror panels. In our Mandarin Oriental signature style you will find the finest quality is reflected in every detail.

Mandarin Oriental Hyde Park, London

Location:

- A highly prestigious address on Knightsbridge
- Facing London's leading fashion stores and the green expanse of Hyde Park
- Knightsbridge underground station is on the corner with easy access to the City and West End

Suites:

- 25 richly furnished suites overlooking Knightsbridge, Hyde Park or our quiet courtyard
- State-of-the-art technology including Bang & Olufsen flat screen television and DVD player with surround sound
- 242 square meter Royal Suite with sweeping balcony and private dining room seating eight
- A Guest Services Manager on every floor
- Underground parking with private access

Restaurants and bar:

- Superb views over Hyde Park from our restaurants
- Bar Boulud, London, seasonal French bistro
- Dinner by Heston Blumenthal, inspired by historical British cuisine
- Mandarin Bar, the chicest bar in fashionable Knightsbridge

Meeting and business:

- Six impressive spaces with period character
- Views of the park and filled with natural light
- Catering for up to 650 guests
- Fully equipped Business Centre

Spa:

- Consistently voted one of the best spas in the World
- Exclusive range of Signature Spa Therapies and tailor made Time Rituals™
- A serene Heat and Water Oasis
- Private consultations for guests' total wellness

Leisure:

- Fully equipped state-of-the-art gymnasium
- Adjacent to Hyde Park and 350 acres of green space
- Prime view of Household Cavalry's daily procession
- London's leading fashion stores, Harvey Nichols and Harrods, are across the road
- Excellent location for London's most famous theaters and museums



Hotel Address:

66 Knightsbridge, London SW1X 7LA, United Kingdom
Telephone +44 (0)20 7235 2000

molon-reservations@mohg.com
mandarinoriental.com/london
Online Reservations

